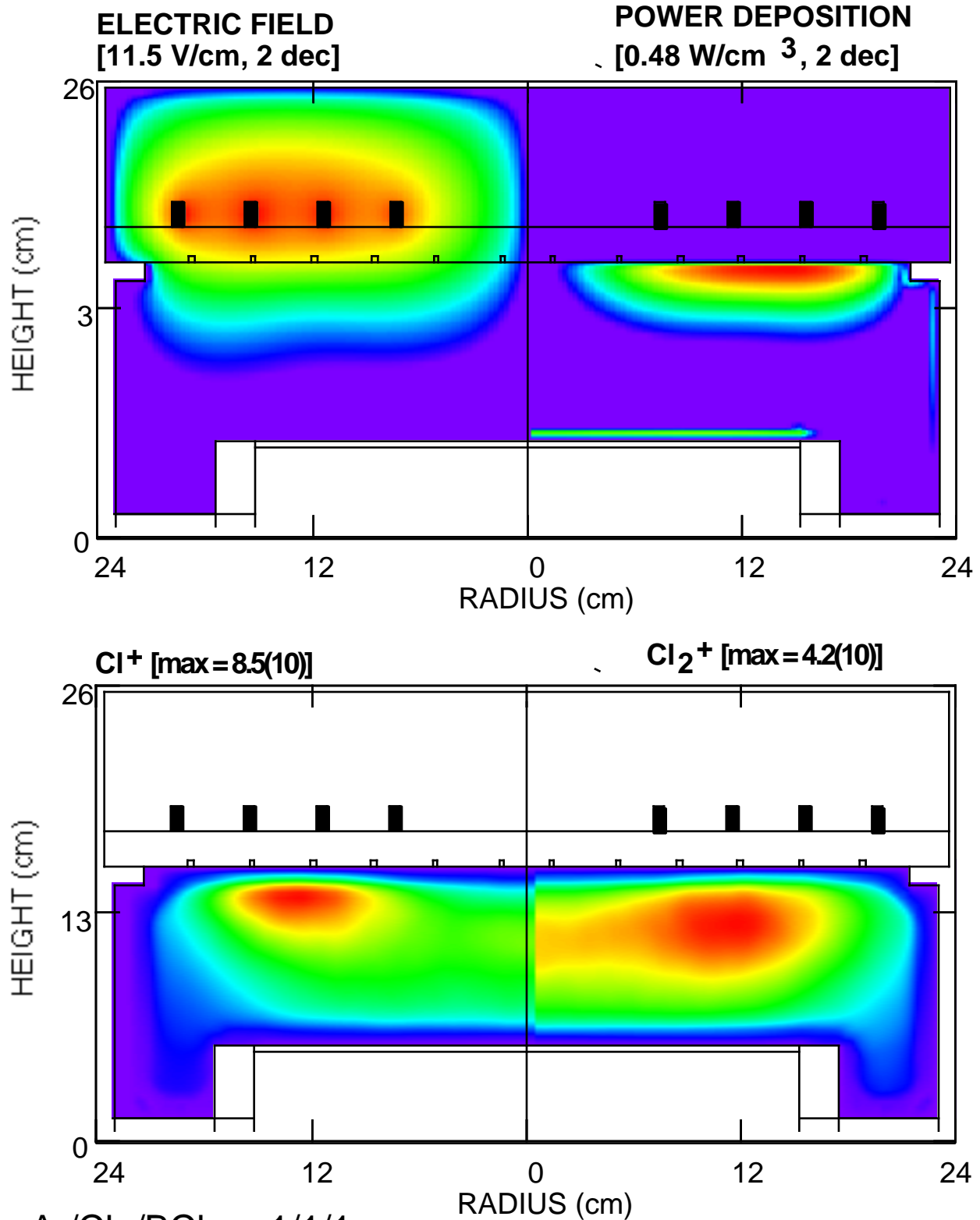
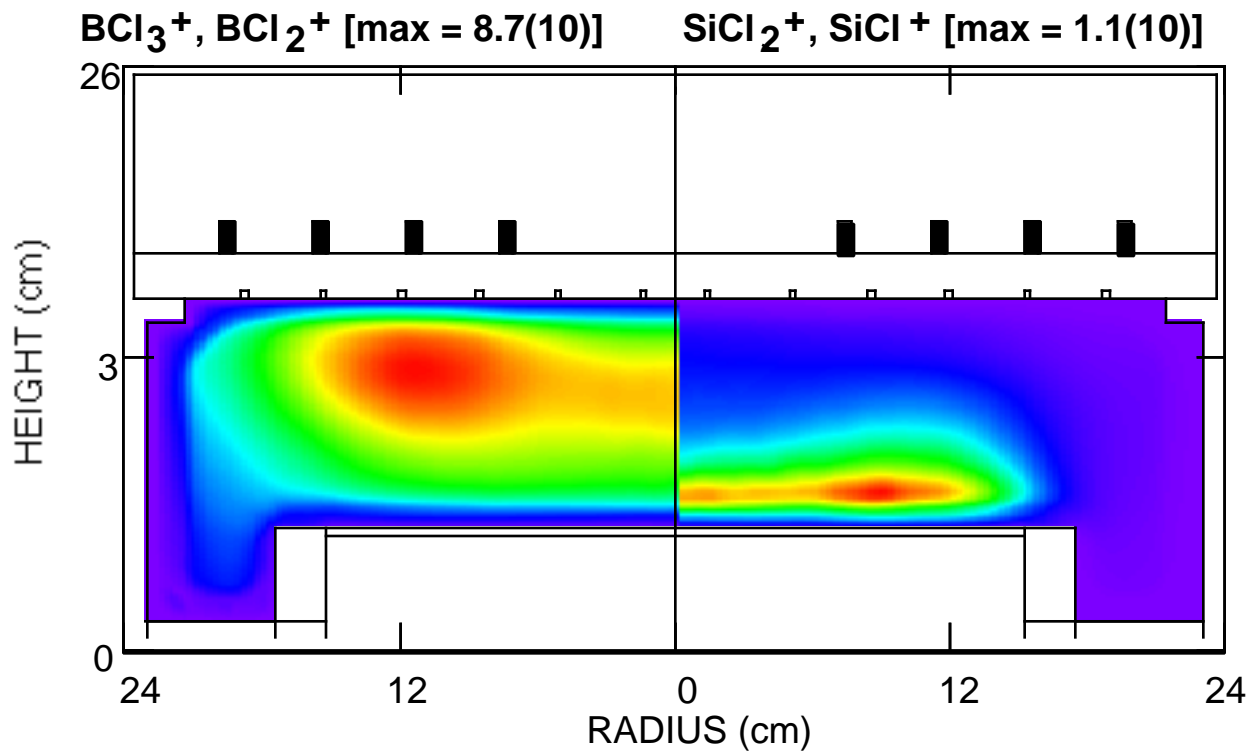
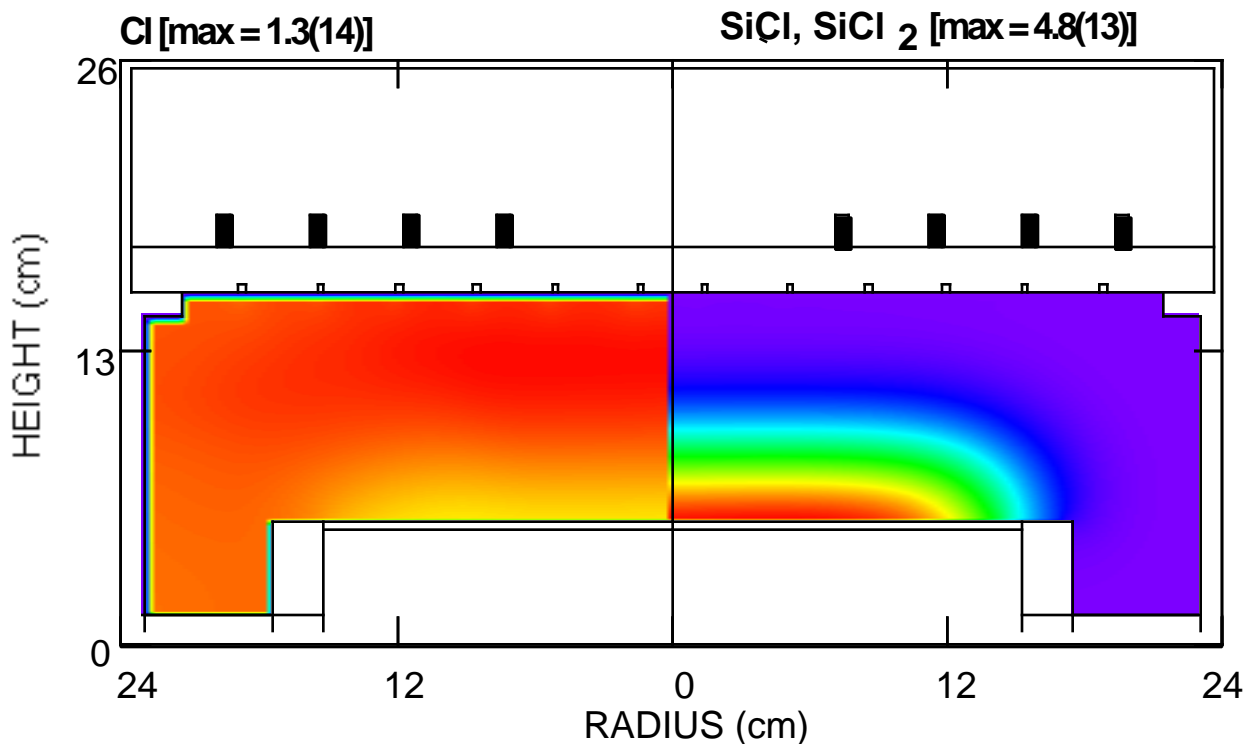


# 300 mm ETCH TOOL: ELECTRIC FIELD, POWER, ION DENSITIES



- Ar/Cl<sub>2</sub>/BCl<sub>3</sub> = 1/1/1,  
10 mTorr, 600 W ICP,  
100 V bias, 150 sccm

# 300 mm ETCH TOOL: PRECURSORS, ETCH PRODUCTS



- Ar/Cl<sub>2</sub>/BCl<sub>3</sub> = 1/1/1,  
10 mTorr, 600 W ICP,  
100 V bias, 150 sccm